

MyScript Studio Forms Edition

MyScript Studio Forms Edition is an end-user application dedicated to **small businesses and individuals** which enables the processing of forms and includes all MyScript Studio Notes Edition functionalities.



This productivity tool allows for the manual or semi-automatic processing of structured documents filled in with any digital writing device in **30 different languages**.

Using the power of MyScript technology, MyScript Studio Forms Edition can convert any handwriting styles from isolated characters to cursive handwriting with the best possible accuracy results.

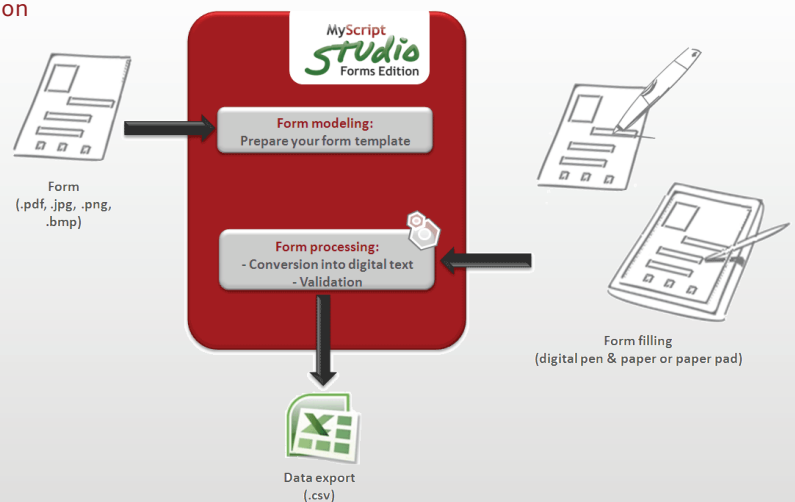


FORM PROCESSING

Form processing with MyScript Studio Forms Edition

You need to process quickly and easily 10, 20,...100 handwritten forms per day? Then discover MyScript Studio Forms Edition:

- ➔ No more retyping of handwritten information
- ➔ Do not change data collection habits
- ➔ Get maximum data quality
- ➔ Retrieve information in a convenient file format



+ Form modeling

You just need to remodel existing forms or new ones using the easy and interactive MyScript Studio Forms Edition design tool. You simply have to load the form layout file (.pdf, .bmp, .jpg, .png), MyScript Studio Forms Edition will display it as a background image so you can easily draw your fields and define their field settings:

- the type (text, boxed characters, check marks),

- the character set used to write (digits, symbols, lower case letters, upper case letters, etc.),
- the language used,
- the dictionary to attach to the field.

The template is ready to use for processing.

Imported form file

Boxed fields

Check boxes

Text field

Settings window

Field types

Character set

Dictionary

+ Process your forms automatically or in 4 steps

Once you have filled forms in during habitual data capture, import data plugging the digital writing device to your PC or simply sending it via Bluetooth. The information is ready to be processed.

Two processing methods are available with MyScript Studio Forms Edition: the manual workflow method, the automatic workflow method.

The manual workflow method

Use the **manual workflow** method if you wish to validate manually each form before exporting results.

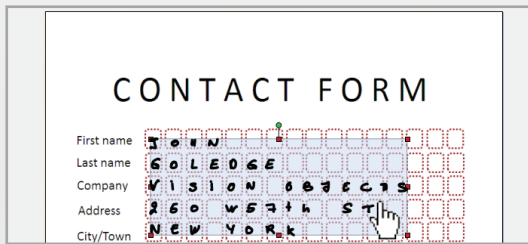
With the manual workflow method, the user will have to go through 4 steps:

I- INK CALIBRATION

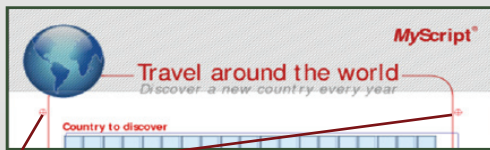
Calibrating your forms means ensuring that the ink on the filled forms matches the field areas on the template. This step is necessary for non-Anoto digital writing devices.

There are 2 types of calibration method:

1- Manual calibration: To perform the calibration manually, you will need to move the ink (by dragging it) to match it correctly with the template.



2- Collaborative calibration: In order to perform calibration automatically, use this option. You will need to print 3 calibration marks on your paper forms that the writer will tick. During processing, these marks are used to match the form instances to the template automatically.



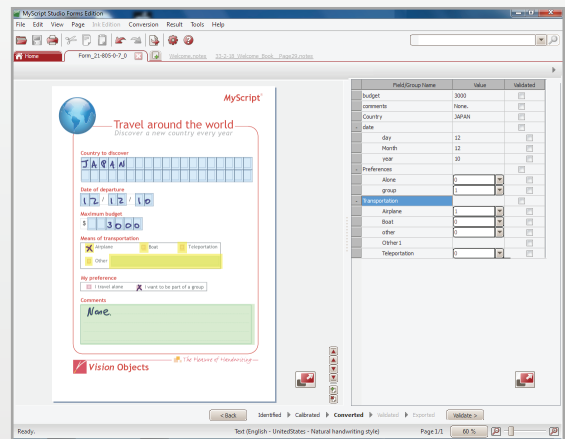
Calibration marks

II- CONVERSION

Your text is then converted according to the settings defined in each field on the template.

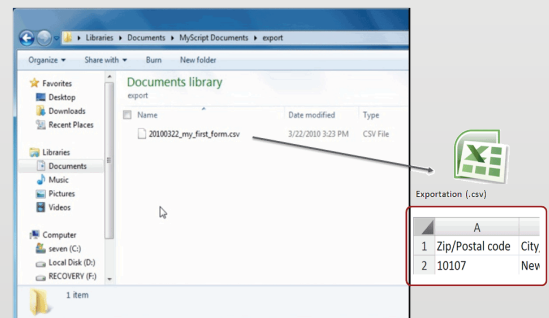
III- VALIDATION

You can visualize each form and accept, reject or correct the results.



IV- DATA EXPORTATION

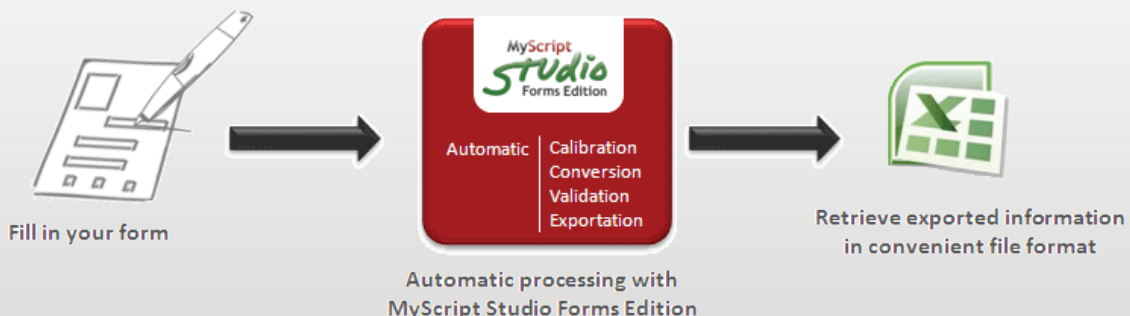
Once you are satisfied by the results, they can be exported into a usable file format (.csv).



The automatic workflow method

Use the **automatic workflow** when you want to process forms quickly and you do not wish to validate results manually.

With the automatic workflow method, once you have linked your digital ink file with the appropriate form model, the results are processed straightaway and available as a .csv file.



NOTES MANAGEMENT

+ Handwriting recognition

Select, convert and edit!

Don't retype your handwritten notes anymore. MyScript Studio Notes Edition does it for you! If needed, you can **edit your digital ink before conversion** in order to perfect your notes: delete information you do not need, remove unsightly corrections or add text and shapes.

All kinds of handwritten notes - text, drawings, indented lists, tables, etc. - **are converted to digital text** directly in the application window. Then, the result can be sent to word processors, to a text editor or to your default e-mail application to share it with others.

To convert your handwritten notes, Select the page you want to convert or a part of it, then click on a button and your digital text is ready! You can now freely modify or format your document (such as add bold, italics, underlining, change the text size and color, make lists, etc).

Based on the MyScript Builder handwriting recognition engine, MyScript Studio Notes Edition features unprecedented handwriting recognition accuracy in **28 languages**. Tested on hundreds of handwriting samples from writers worldwide, MyScript technology takes into account the alphabet, vocabulary and country specific handwriting styles, for accurate conversion into text.

+ Search engine

Find instantly the information you are looking for!

You are looking for specific information, but you do not know where to find it within your notes? No worries, a search function is totally integrated in the application. No more need to glance through your notes one by one, with MyScript Studio you can **make searches by simply typing keywords to find information in your handwritten notes**, without using handwriting recognition before, saving precious time!

The search results quickly display the pages which contain the information you are looking for and its location. The most pertinent results are displayed at the top of the list.

With MyScript Studio, notes are not just archived but they become an active part of your everyday life!

+ Document management

Manage your handwritten notes!

MyScript Studio detects and retrieves incoming handwritten notes downloaded from a pen or other digital device and stores them instantly in a default folder on your PC. You can then **classify** your notes into **virtual notebooks** and **binders** for your personal needs. You can also sort notes by tagging and arranging them by subjects, keywords, themes, etc. Retrieve the notes related to a specific tag by simply clicking on the tag.

The screenshot displays the MyScript Studio Notes Edition application window. The interface includes a menu bar (File, Edit, View, Page, Ink Edition, Conversion, Result, Tools, Help) and a toolbar with various icons. A search bar at the top right contains the text 'welcome'. Below the search bar, a list of search results is shown, with four thumbnails of handwritten notes from 'Easybook July2010' (Pages 2, 3, 4, and 5) displayed in a grid. On the left side, a 'Notes classification' panel shows a list of tags: 'All notes (9/36)', 'Untagged notes (6/32)', 'Geography', 'History (1/1)', 'Poetry (2/3)', 'Literature', and 'easybook July2010 (3/3)'. A 'Search results' label points to the list of results. A 'Handwritten text containing the found items' label points to the thumbnails of the notes. A 'Search bar' label points to the search input field.

+ Trainer module

Create your own writing profile with the Trainer module!

With this functionality you can **create a personal writing profile based on your own writing**. This module helps people whose writing style differs from the average to convert their notes with the best possible accuracy rate.

TECHNICAL SPECIFICATIONS

Supported devices & file formats

MyScript Studio Forms Edition can support most handwriting input devices such as Digital Pens, Graphic Tablets, Tablet PC, etc. It works with the following file formats:

- .dhw — ACECAD DigiMemo (only single page documents),
- .dnt — UC Logic LaPazz,
- .eli & .ant — EPOS, DANE-ELEC Z-pen,
- .irx — iRex iLiad,
- .notes — MyScript Notes (native format),
- .pen — Logitech IO & IO2 Digital Pen,
- .pgd, .pgc — Digital Pens (Maxell, Nokia, Anoto),
- .pnt — Pegasus NoteTaker and Mobile Note Taker, YiFang, Fujitsu-Siemens, Pentel,
- .ps — IBM Crosspad,
- .svg — Sony Ericsson Chatpen,
- .top — WALTOP Digital Ink Pad, WALTOP EZPad, Genius G-Note 7000.

System requirements

CPU: Minimum Pentium 2 GHz

RAM: Minimum 1 GB

Operating System*:

Microsoft® Windows 7, Windows Vista, Windows XP
Windows XP Tablet PC.

Hard Disk Space: From 160 MB (1 recognition language) to 560 MB (28 recognition languages)

Screen Resolution: 1024 x 768 minimum

Supported languages

MyScript Studio Forms Edition recognizes natural handwriting in 30 languages:

- Arabic
- Chinese (Simp. & Trad.)
- Czech
- Danish
- Dutch
- English (Can/ UK/ US)
- Finnish
- French (Can/ Fr)
- German
- Greek
- Hebrew
- Hungarian
- Italian
- Japanese
- Kazakh
- Korean
- Norwegian
- Polish
- Portuguese (Braz./ Port.)
- Russian
- Spanish (Mex./ Sp.)
- Swedish
- Turkish
- Vietnamese

User Interface language: English

Using Anoto penDocumentPro

MyScript Studio Forms Edition is compatible with Anoto penDocumentPro, providing you have the means to print your forms with the Anoto dot pattern.



1- Print your form with the Anoto dot pattern:

Simply print your form from any Windows application using the Anoto penDocuments Pro printer driver. The Anoto dot pattern is added to the document as it is printed.



2- Fill your form with your Anoto Digital Pen.

3- Plug your Anoto Digital Pen to your PC and retrieve your completed forms directly in Myscript Studio Forms Edition.

4- Use the automatic workflow method to process your form.

For more information on Anoto penDocumentPro, please visit the Anoto website

OEM: Add value to your hardware!

MyScript Studio Forms Edition can be integrated as a standalone application. You can bundle it with your products, or as a kit to create your own note management and form processing application.

To learn more about how MyScript Studio Forms Edition can be adapted to special needs, please contact Vision Objects' sales team through the contact form on our website (www.visionobjects.com).

* Framework .NET 2.0 required on specific configuration

Vision Objects
2, allée des Vieux Tilleuls
44 300 - Nantes - FRANCE



Tel: +33 2 28 01 49 50
Fax: +33 2 40 25 89 20
www.visionobjects.com